

# TRANSVERSE 2.0T INTERCOOLER INSTALLATION INSTRUCTIONS

**APR, LLC**

1027 Opelika Road Auburn Alabama 36830



---

## Notes:

These instructions were written for a MkV VW GTI/Jetta, but other models (Audi A3, VW EOS) are similar.

When disassembling the car, be sure to keep all mark all fasteners so they can be reused. It is recommend that you get some kind of compartmented tray to organize the fastners, such as a fishing tackle box or several large ice cube trays. Fasteners that are not reused for reinstallation are noted in the instructions.

These instructions assume that you have basic mechanical skills and several varieties of the tools listed in order to install the kit. If you have any questions about the install, feel free to contact your APR representative.



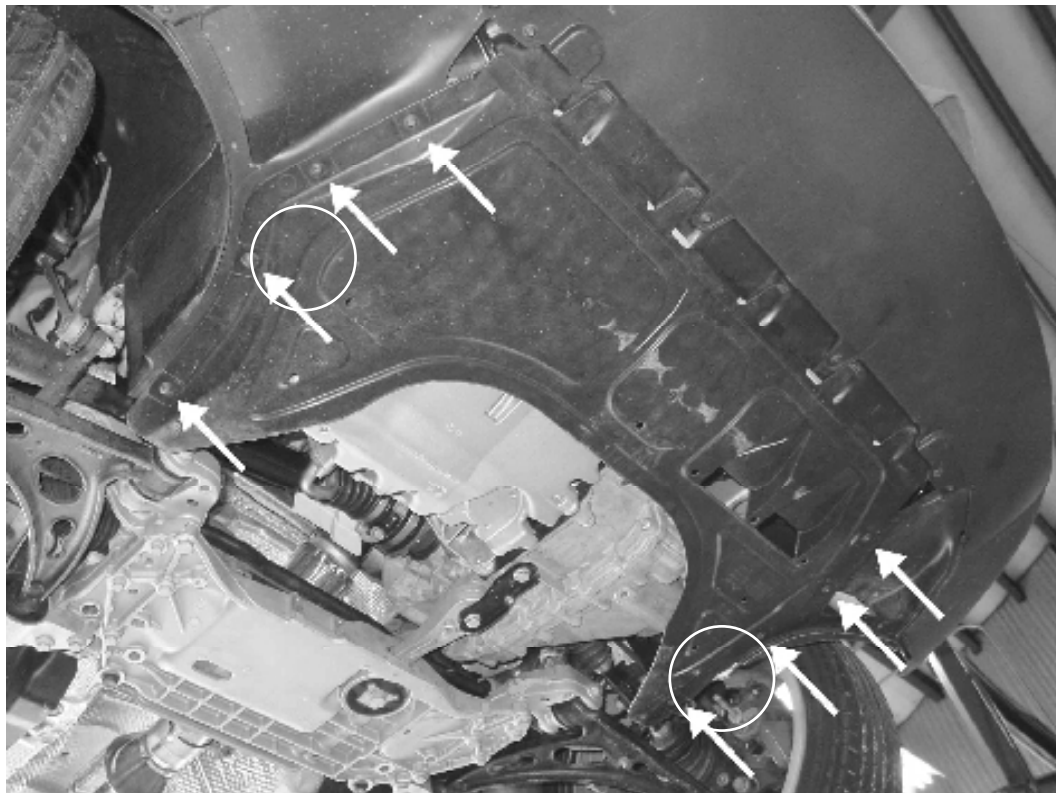
1) Support the car on jack stands or a lift. Open the hood and disconnect the 10mm negative battery terminal.

- 10MM HEX



2) Remove the belly pan on the car with a T25 Torx.

- T25 TORX



**APR, LLC**

1027 Opelika Road Auburn Alabama 36830

Installation Procedure - Step 2

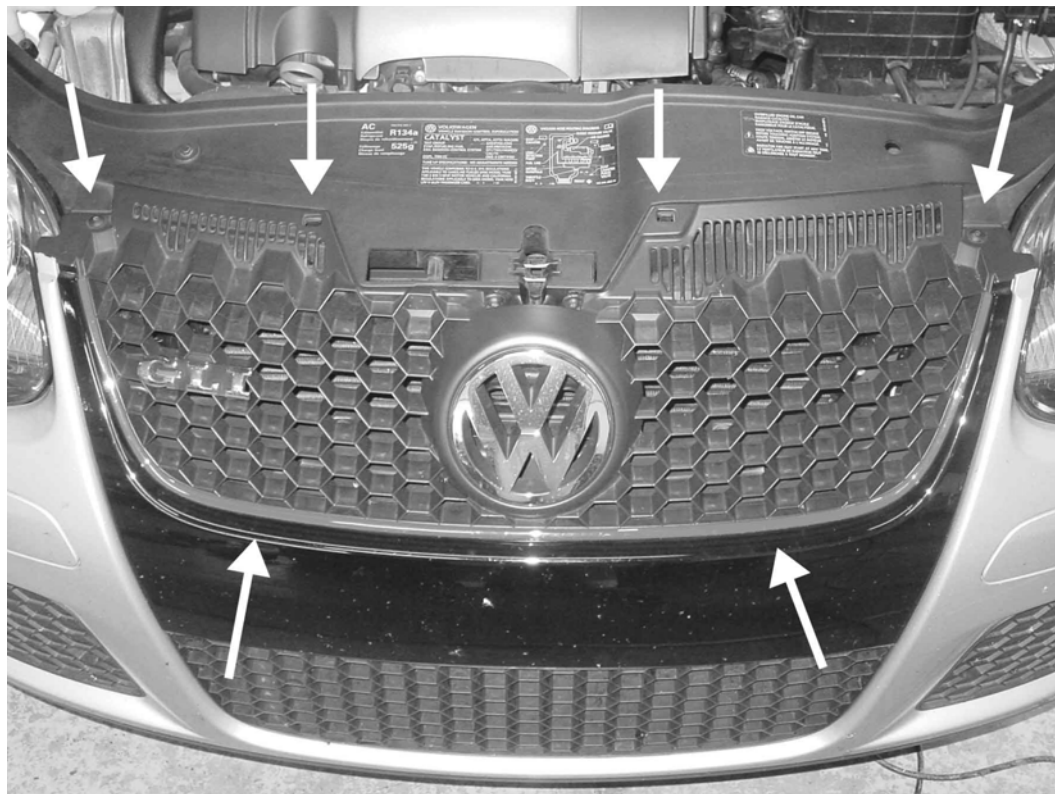


3) Remove the two T25 screws that connect the intake ducting to the radiator support. Then remove the hose clamp next to the round accordion tube, and remove the intake from the car.

- T25 TORX

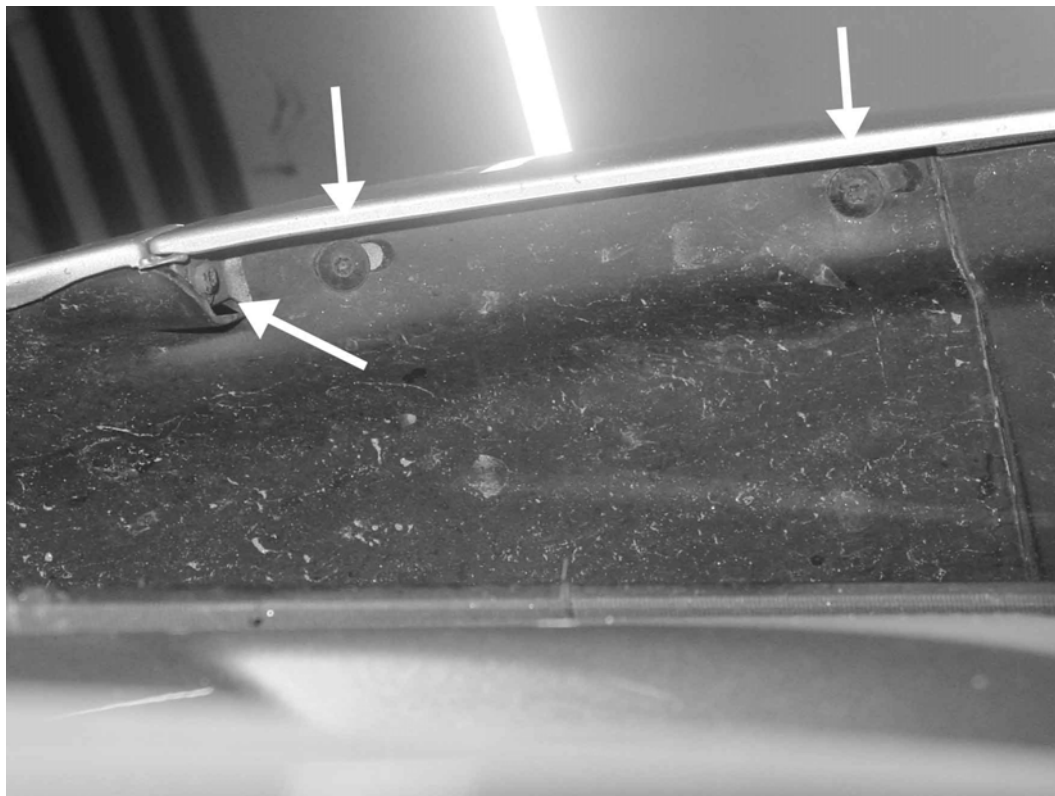


4) Remove the front radiator grill. Remove the two upper T25 Torx screws, and then the two lower Phillips screws. Depress the two upper center clips with a small screwdriver and tilt the upper part of the grill away from the car. The grill can then be lifted and removed from the car.



- T25 TORX  
- #1 PHILLIPS



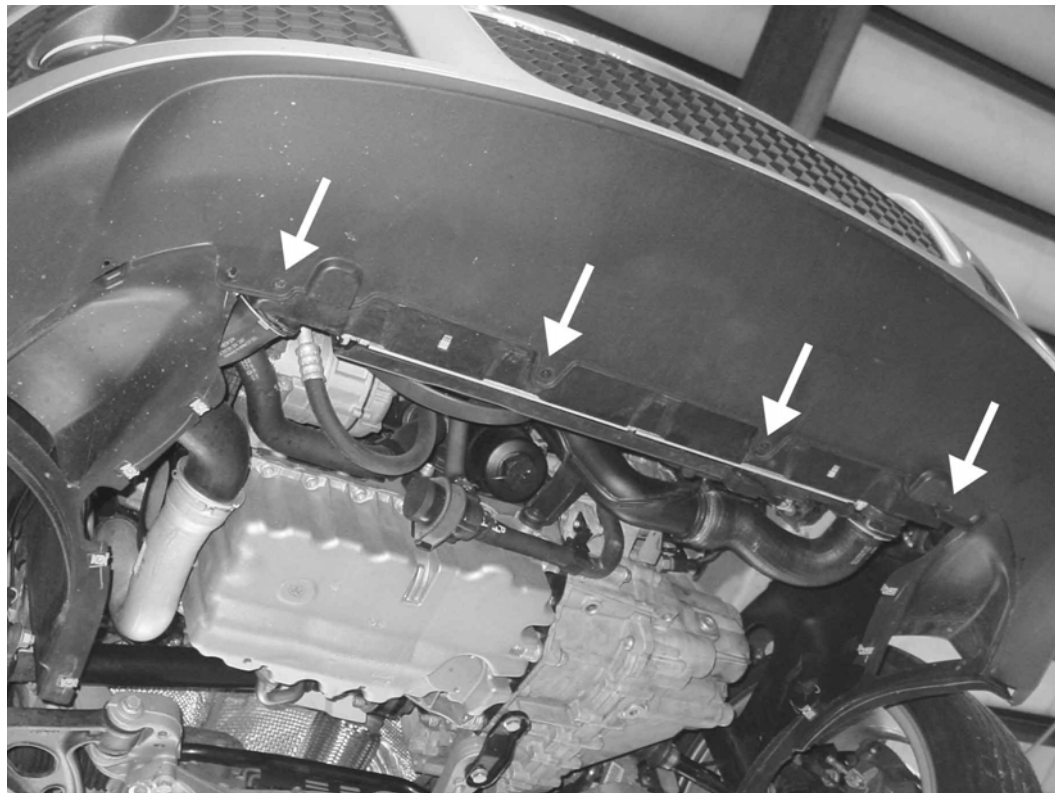


5) Remove the T25 Torx Screws that run along the inside of the front of the wheel wells. These connect the fender liner to the bumper. Also remove the two screws that connect the bumper to the fender.

- T25 TORX

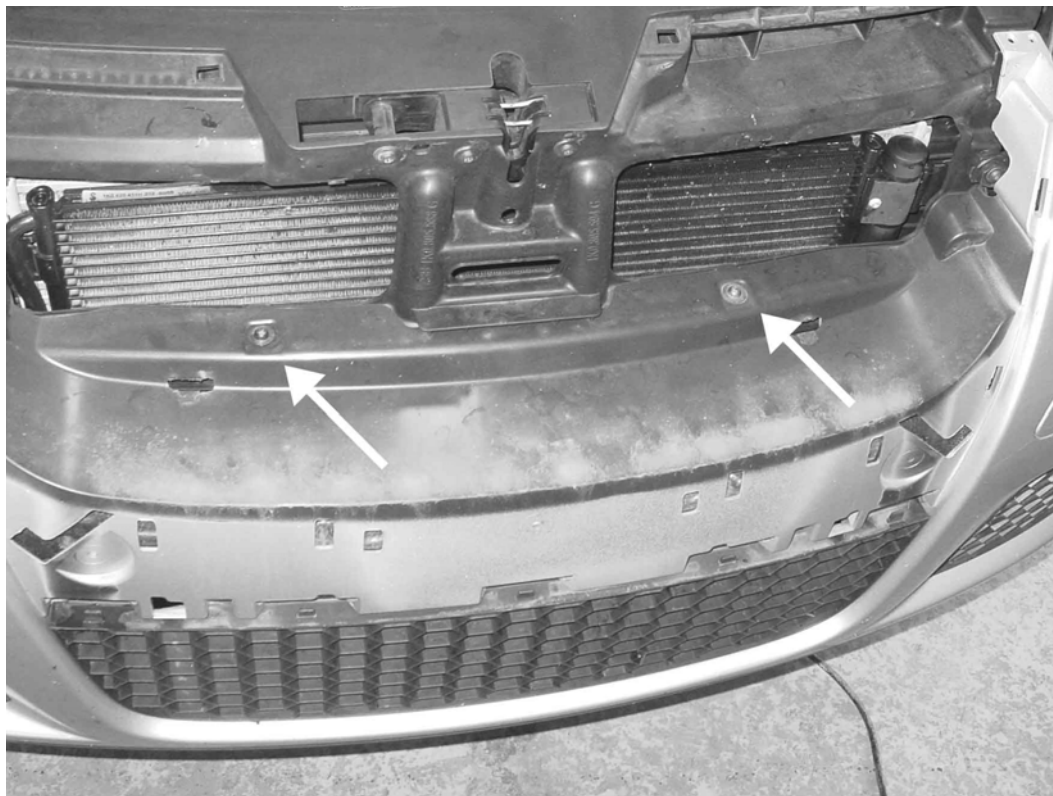


6) Remove the T25 Torx Screws that run along the bottom of the front bumper.



- T25 TORX



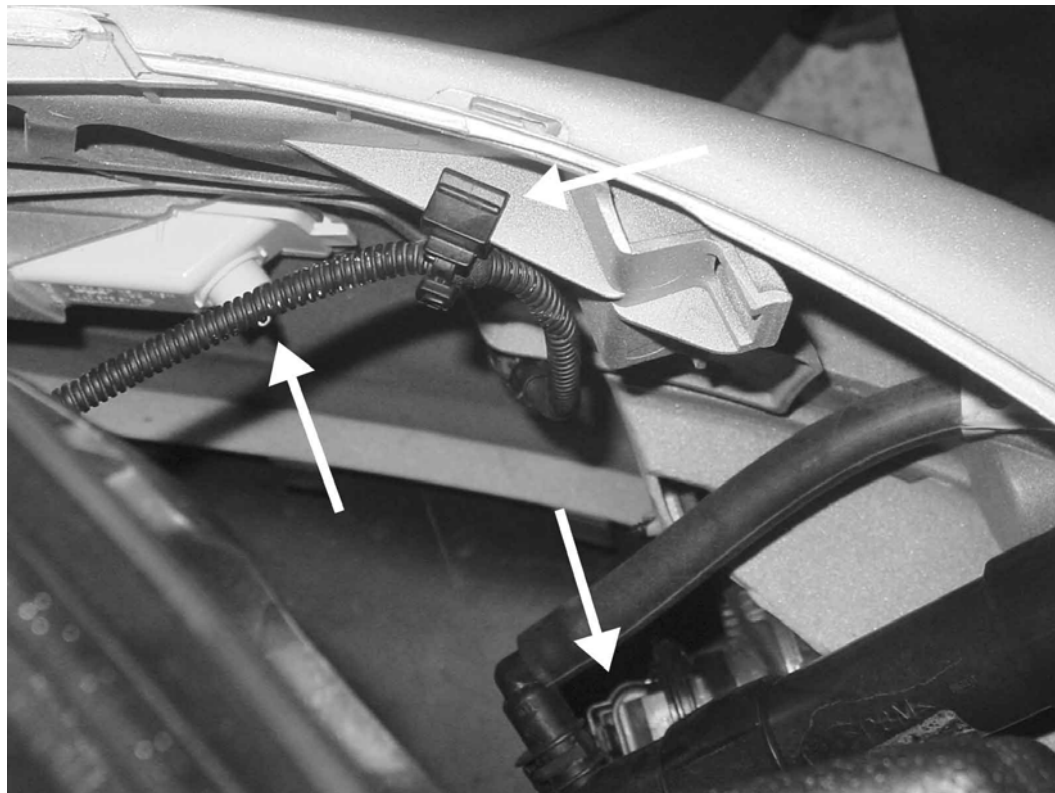


7) Remove the two T25 Torx Screws and the two T30 Torx Screws on the top of the bumper that were revealed when the radiator grill was removed.

- T25 TORX  
- T30 TORX



8) Disconnect the foglight electrical connector and sidemarker connector from each side of the bumper. Disconnect the metal clip connecting the wiring harness to the bumper.





9) With a partner, slide the bumper cover forward several inches. Clamp the headlight washer line before the "T" with a suitable tool to prevent washer fluid loss. Remove the washer lines from the clips at each washer, and separate the line from the clips in the bumper.

10) Remove the bumper and carefully set aside as not to scratch the paint.



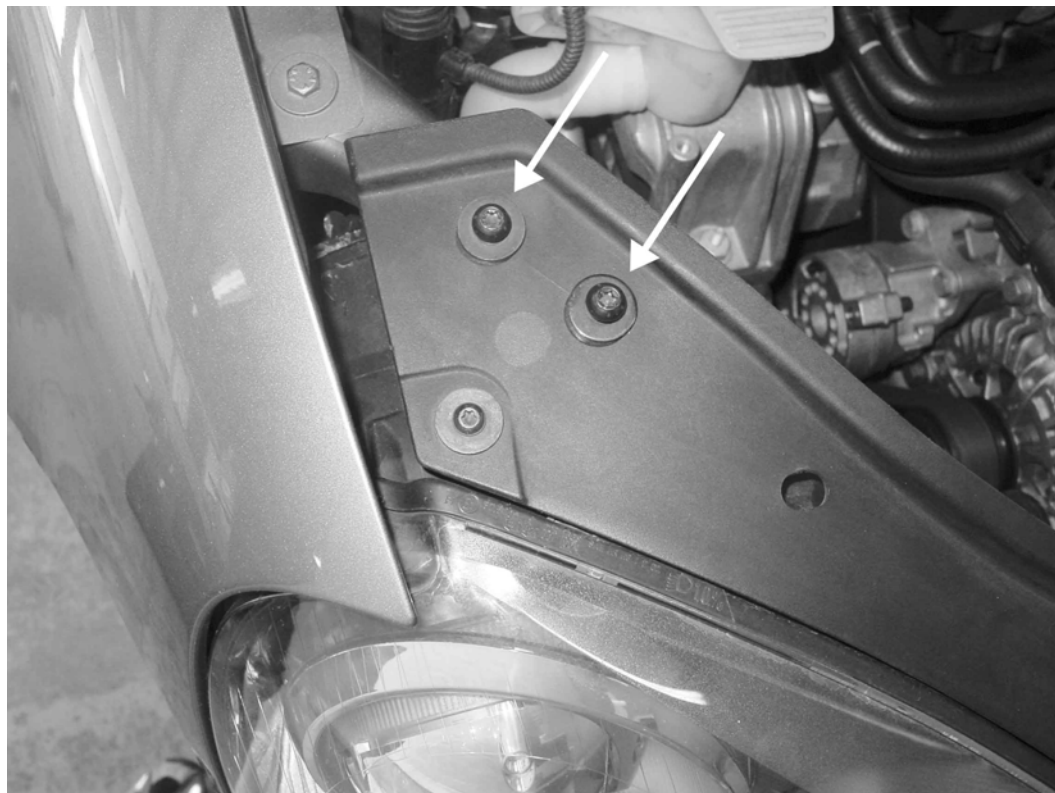


11) Unclip the hood release coupling located above the driver's side headlight. Open the coupling with a small screwdriver and release the cable.

- FLAT



12) Unscrew the two T25 screws connecting the radiator core support to the front fender on both the drivers and passenger side. Do NOT remove the headlight bolt located in front of these two.



- T25 TORX





13) Remove the 8mm bolt that connects the noise booster to the upper radiator support.

- 8MM HEX

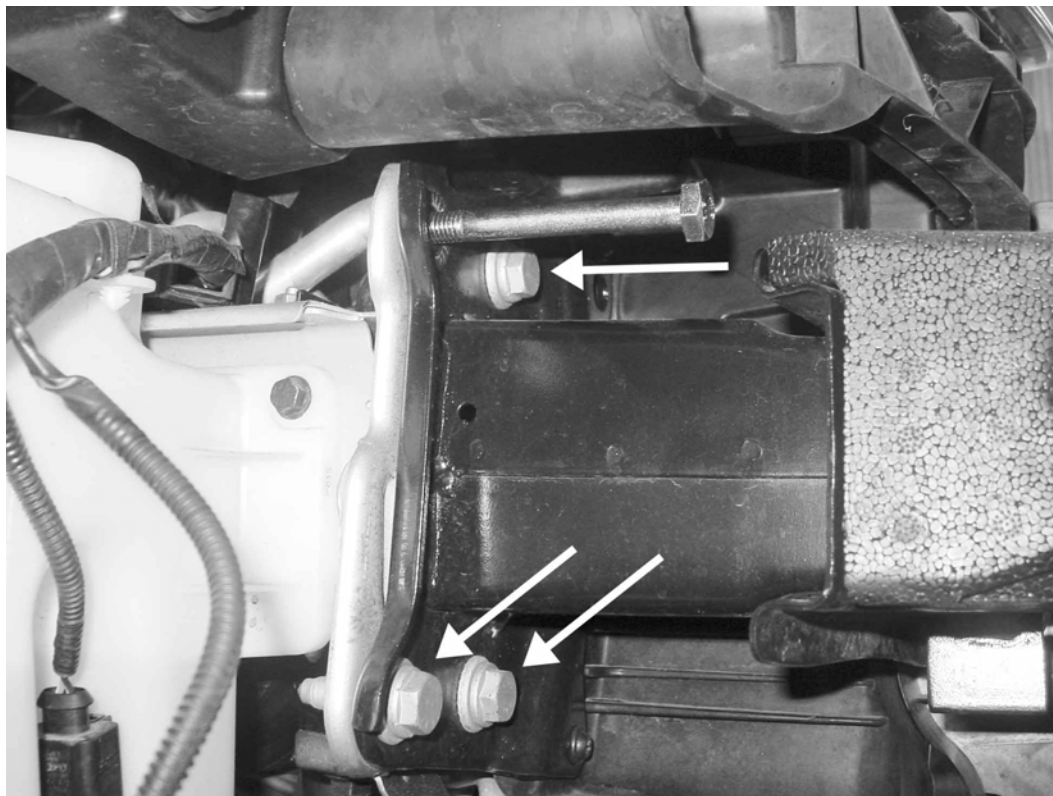


14) There are eight 16mm bolts attaching the radiator core support to the front frame rails. **ONLY** remove the upper, outer bolts on both sides and replace these with the long bolts supplied with the APR intercooler kit. Only thread the bolts in to the same depth as the factory fastener.



- 16 MM HEX





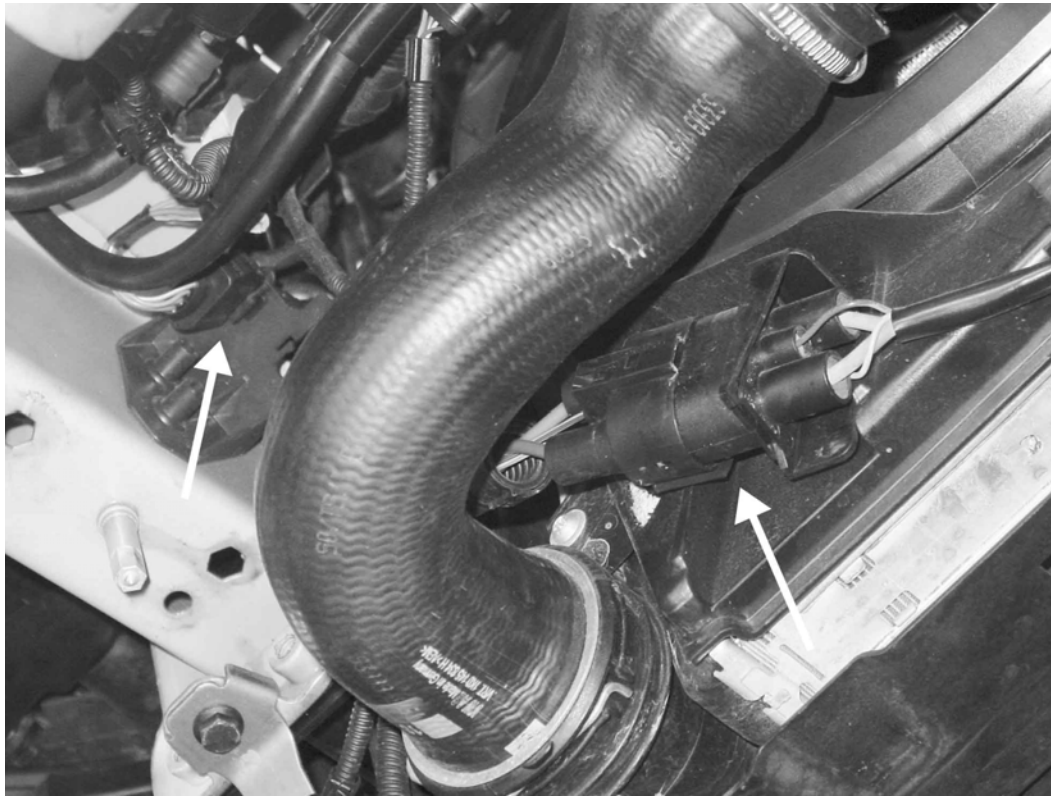
15) Remove the remaining six 16mm bolts from the car and carefully pull the radiator core support forward an inch or two. Be careful not to stretch the two air conditioning lines located on the passenger side of the A/C condenser.

- 16MM HEX



16) Disconnect the following electrical connectors from above: A/C pressure sensor (located on the passenger side of the A/C condenser), both headlights assemblies, and the hood latch sensor (located to the drivers side of the passenger headlight). After confirming the battery on the car is disconnected, disconnect both passenger and drivers side airbag crash sensors (the yellow connectors located between each headlight and the radiator). Push the green tab of the connector towards the sensor, and then pull the sensor off.





17) From below, disconnect the fan wiring harness connector located on the back of the driver's side of the radiator fans. On the driver's side frame rail, some models have a connector to disconnect the wiring harness that goes to the foglights and sidemarkers. Otherwise it is necessary to remove the wiring harness from the radiator core support, including the outside air temperature sensor.

18) Remove the headlight supports under the headlights. There are two T25 Torx screws on either side of the car.



- T25 TORX



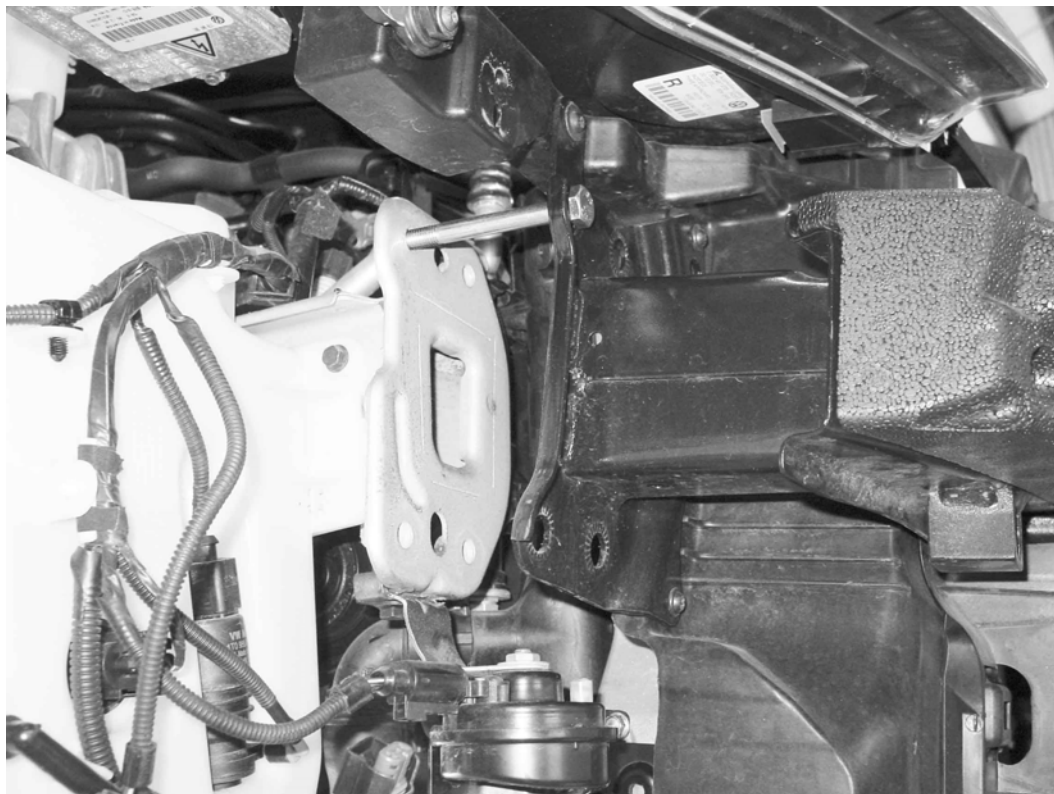


19) Loosen the T30 screws that connect the radiator core support to the intercooler side grommets. There is one screw on either side that is revealed once the headlight support is removed.

- T30 TORX



20) Carefully pull the core support further forward away from the car. You should be able to pull the core support approximately four inches away from its original position. Be careful not to stretch the two air conditioning lines located on the passenger side of the A/C condenser, and keep an eye out for any other connections that are still attached.



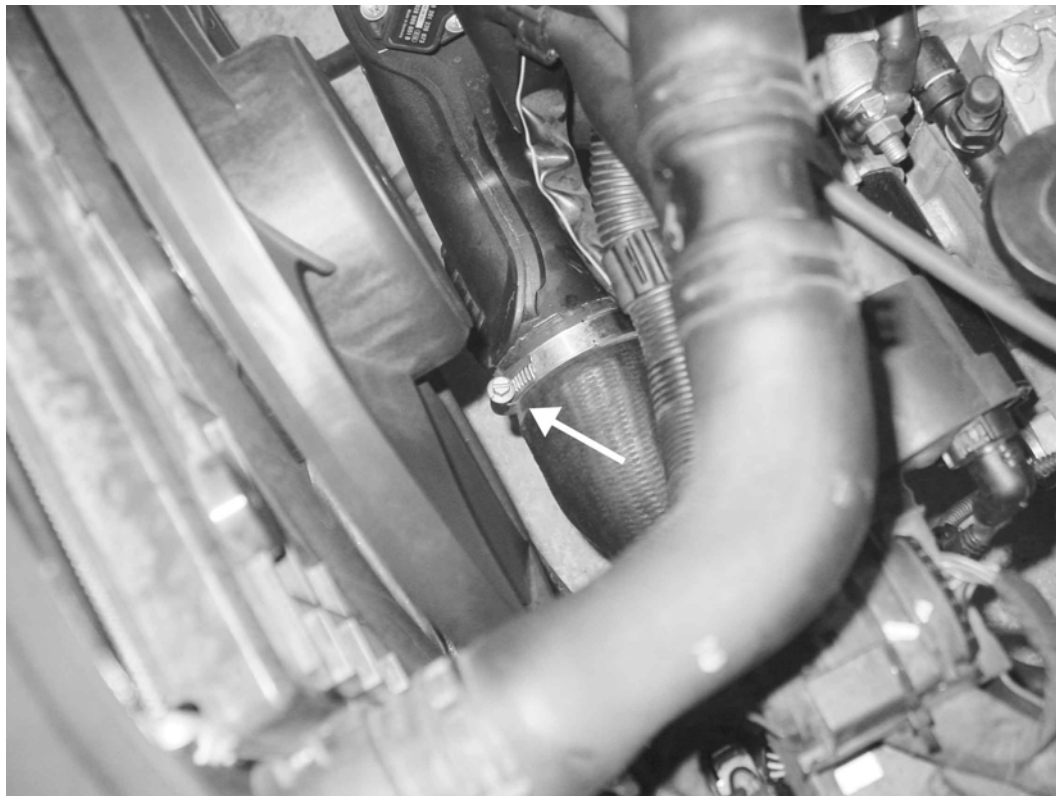
- T25 TORX



**APR, LLC**

1027 Opelika Road Auburn Alabama 36830

Installation Procedure - Step 20

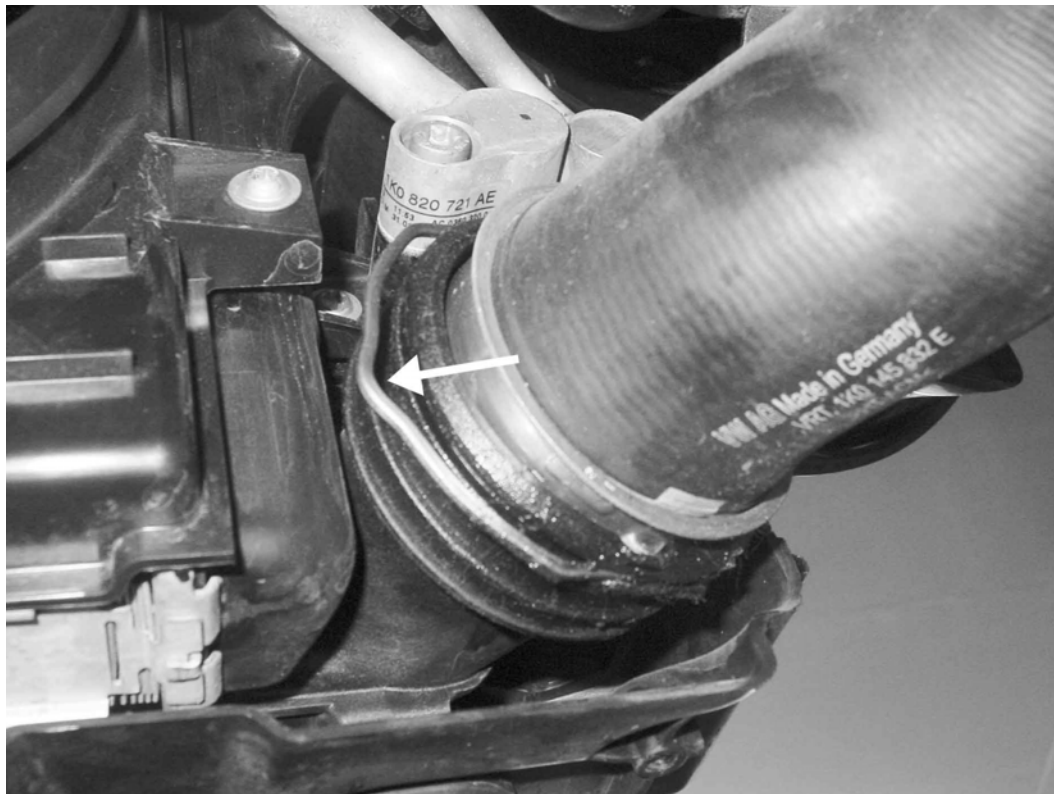


21) Loosen the hose clamp on the passenger side intercooler hose from above the car.

- FLAT



22) Remove the lower intercooler hoses and clamps. On the rest of the intercooler hose connections, you must first pull the locking clip away from the coupling, and then the hose will slide out of the connector. Keep the passenger side hose separate, as the seal from this hose will be reused.





23) With a partner, remove the two APR-supplied bolts from both sides of the radiator core support. Remove the condenser/intercooler/radiator/fan assembly from the core support by sliding the upper part of the intercooler assembly away from the top of core support. While doing this, the intercooler side grommets will side out of the core support. Once the side grommets of the intercooler are free, lift the intercooler assembly up and out of the core support. Set the core support aside.

24) Once the core support is removed, support the radiator and radiator fans to prevent them from getting damaged by resting on the engine.



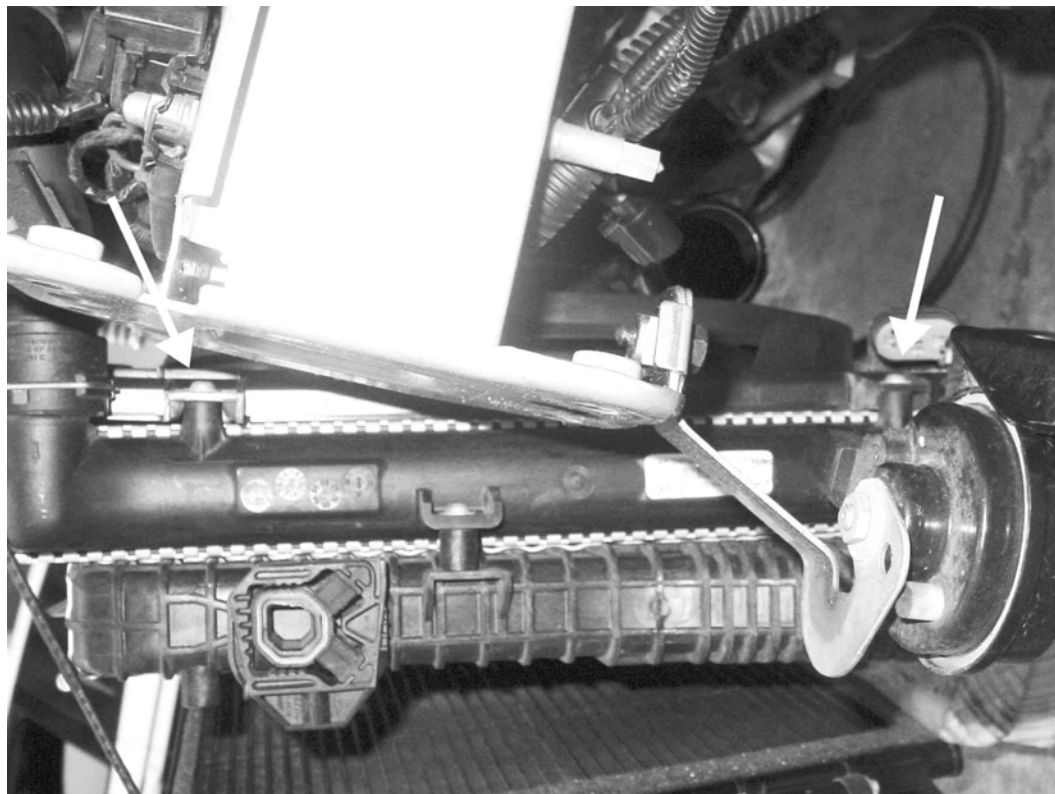


25) Begin to separate the A/C condenser from the intercooler by removing the four T30 screws from the front of the condenser. There is also one T30 screw on the passenger side holding the condenser lines to the intercooler. These five screws are not reused.

- T30 TORX



26) Remove the intercooler from the radiator by removing the four T30 Torx screws from the back side of the radiator. These four screws are not reused.



- T30 TORX





27) Carefully maneuver the stock intercooler out of the car from between the condenser and the radiator.

28) After removing the stock intercooler from the car, install the APR intercooler in its place. Connect the radiator to the APR intercooler using the four supplied 10mm bolts. These four bolts connect the radiator to the APR intercooler in the same locations as stock intercooler.



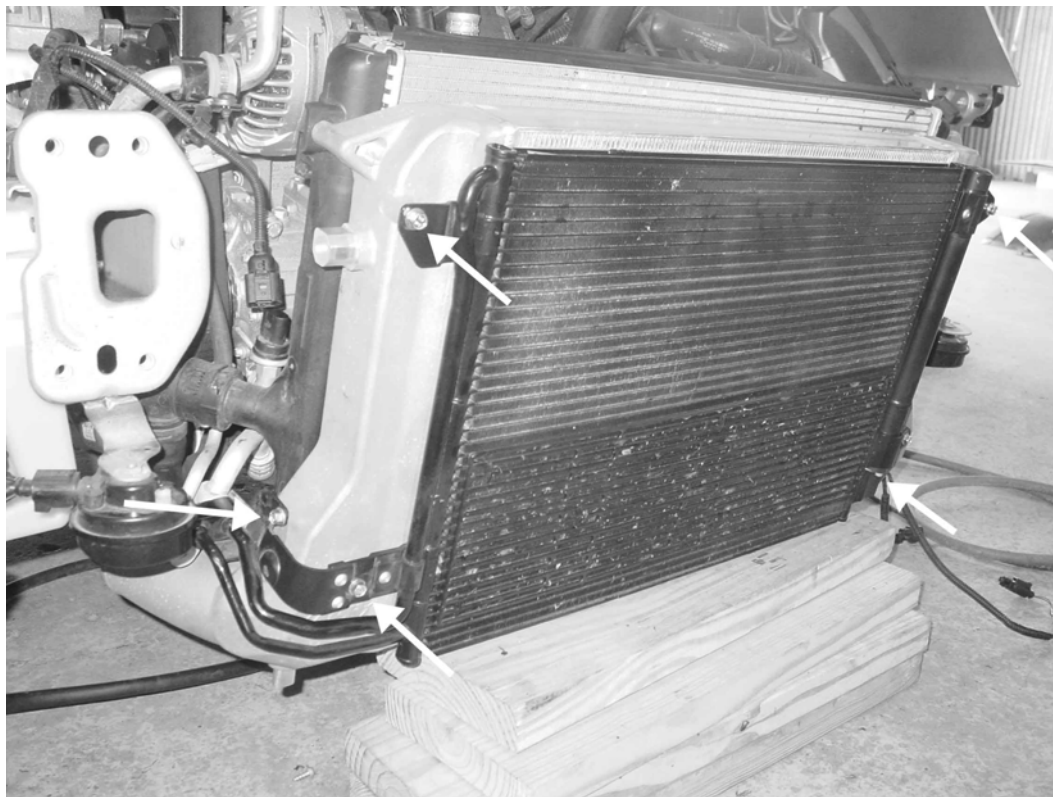
- 10MM HEX



**APR, LLC**

1027 Opelika Road Auburn Alabama 36830

Installation Procedure - Step 28



29) Connect the condenser to the APR intercooler using the five 10mm bolts. These five bolts connect the condenser to the APR intercooler in the same locations as the stock intercooler. Be sure to install the side condenser hose bolt first before trying to install the four bolts on the front of the condenser.

- 10MM HEX



30) Remove the side intercooler grommets from the stock intercooler noting their orientation. Slide these on the APR intercooler in the same location.



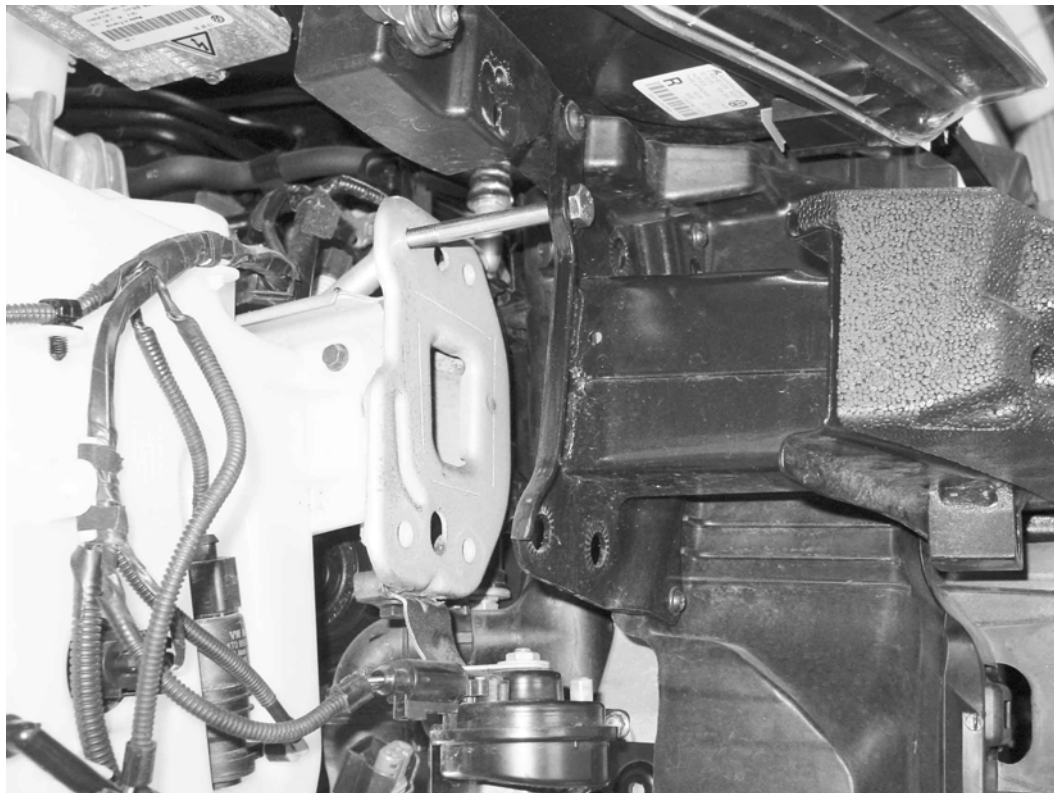


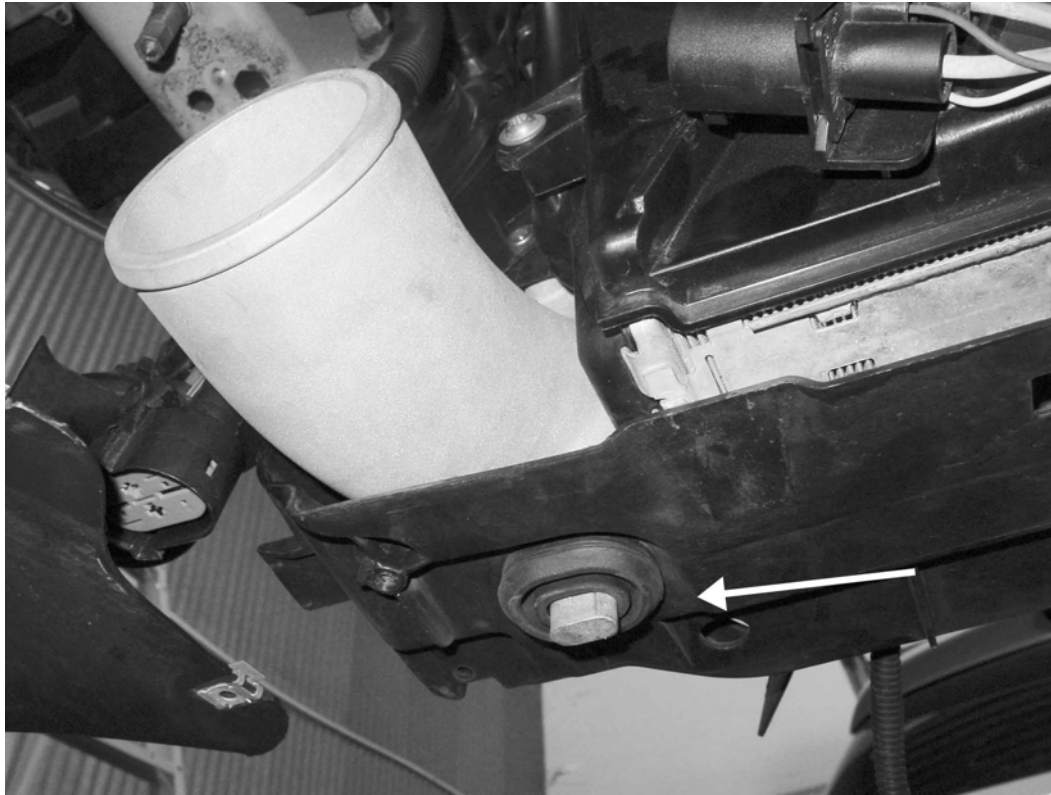
31) On the radiator core support just above where the side intercooler grommets mount, you must trim off the excess plastic outlined in the picture. Otherwise, the upper condenser to intercooler bolts will hit the core support. The plastic is easily cut with snips or side cutters.

- CUTTERS



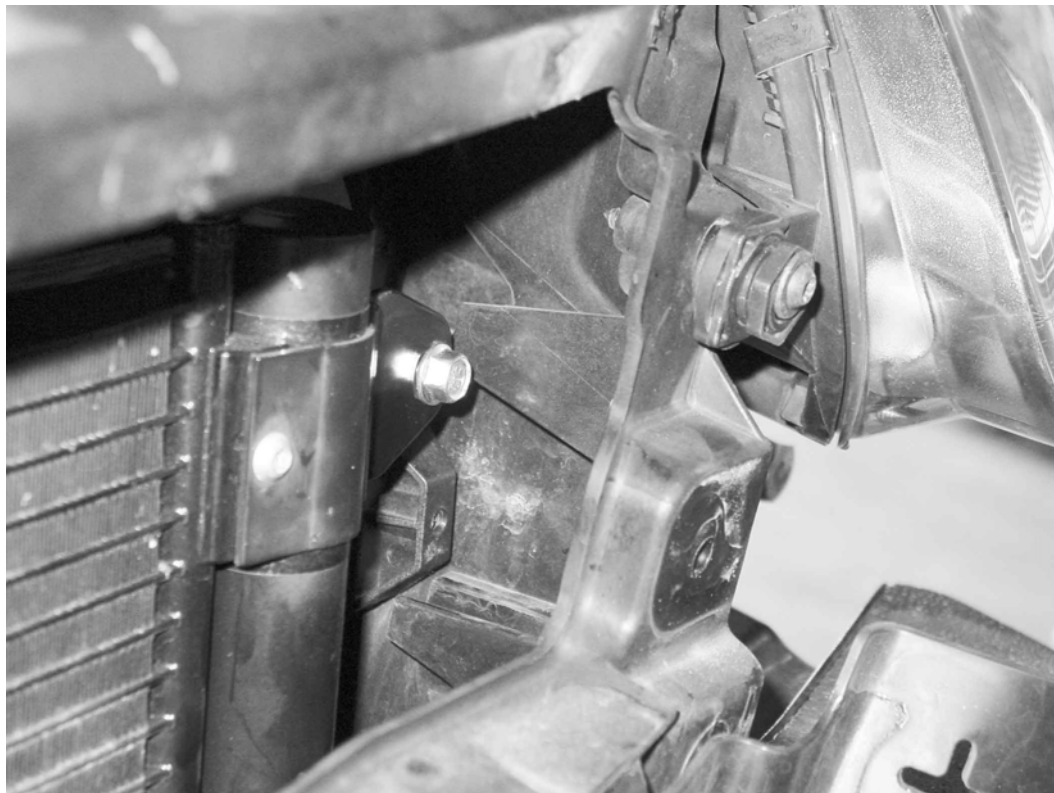
32) With help from a partner, get the radiator core support and place it close to its original position. Install the two long supplied bolts (one on either side) between the core support and the front frame rails.





33) From underneath the car, lift up on the intercooler/condenser/fan assembly and set the bottom "feet" of the APR intercooler into the rubber grommets on the core support.

34) Rotate the top of the intercooler into the core support, making sure the side intercooler grommets mount into their respective locations on the radiator core support.





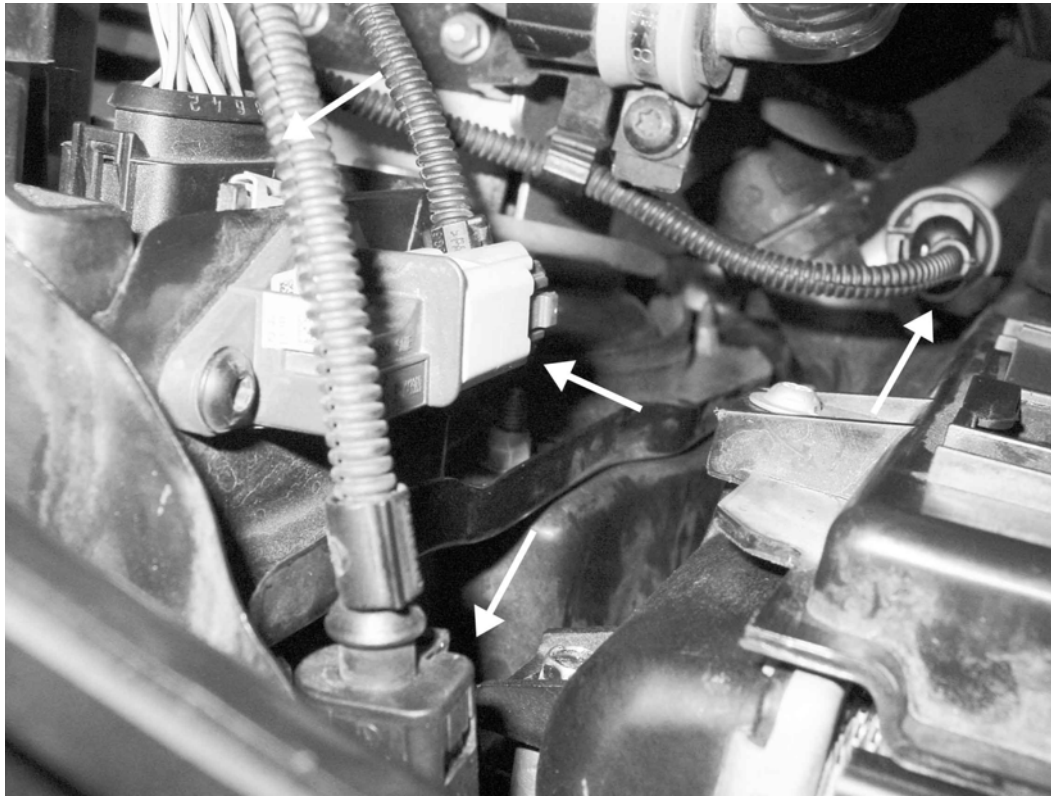
35) From the front of the core support, attach the two T30 screws that connect the intercooler side grommets to the radiator core support.

- T30 TORX



36) Slide the entire radiator core support back towards the front frame rails, making sure that all wiring harnesses, the hood release cable, and other lines are free and not trapped. Keep the core support approximately two inches from contacting the frame rails.





37) From the top of the car, reconnect the following electrical connectors: A/C pressure sensor, both headlights, and the hood latch sensor. Again, after confirming the battery on the car is still disconnected, reconnect both of the yellow airbag crash sensors.

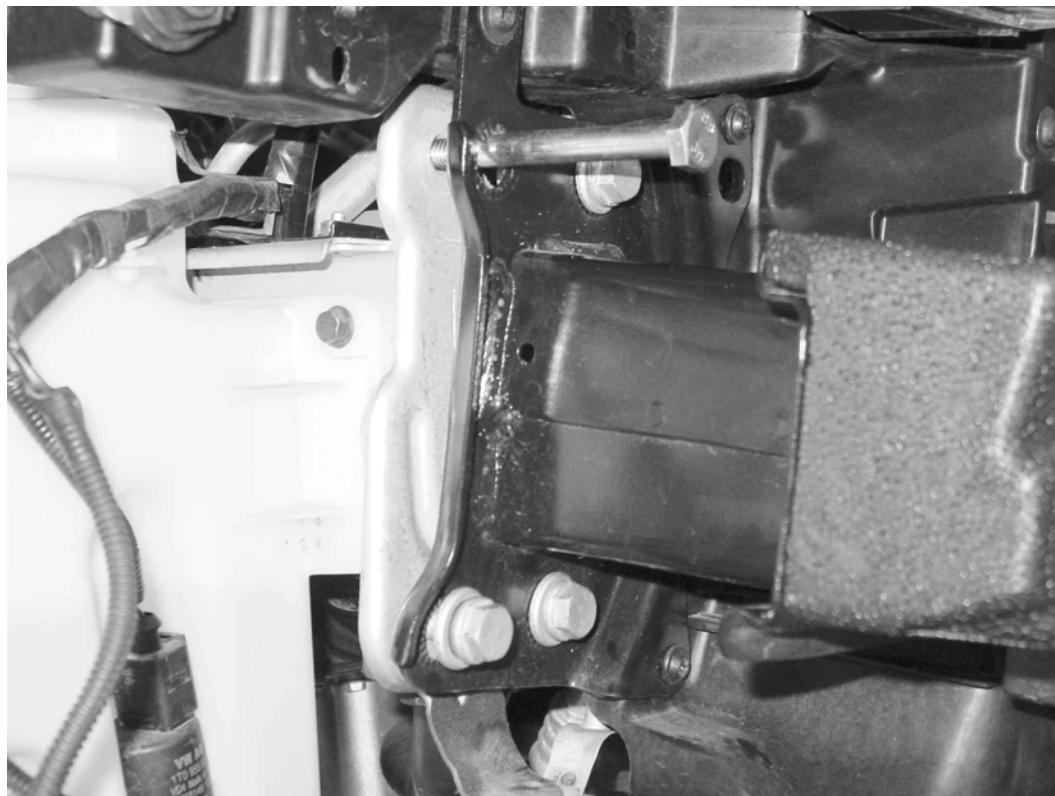
38) From below the car, reconnect the fan wiring harness and the foglight/sidemarkers wiring harness. On some models, it may be necessary to reroute this wiring harness back onto the radiator core support.





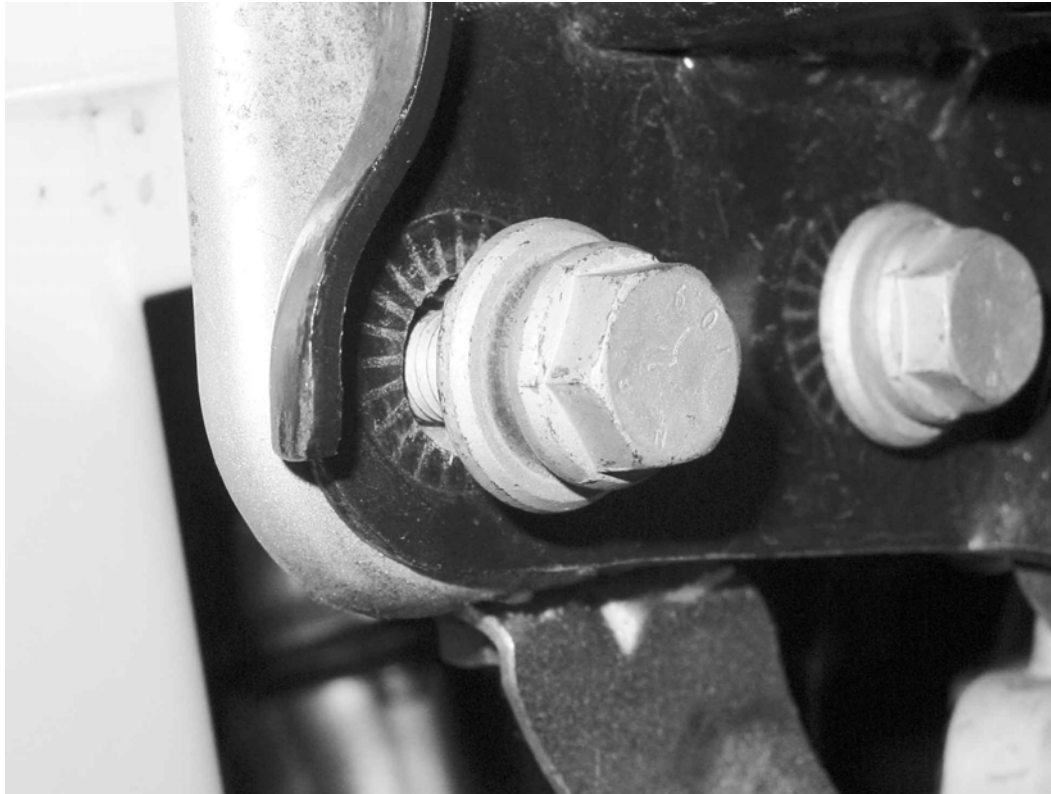
39) Making sure all connectors and hoses are clear, push the radiator core support back to where it is touching the front frame rails.

40) Loosely reinstall the six (three on either side) 16mm bolts that connect the core support to the frame rails. Also loosely reinstall the four (two on either side) T25 screws that connect the core support to the top of the front fenders.



- 16MM HEX
- T25 TORX



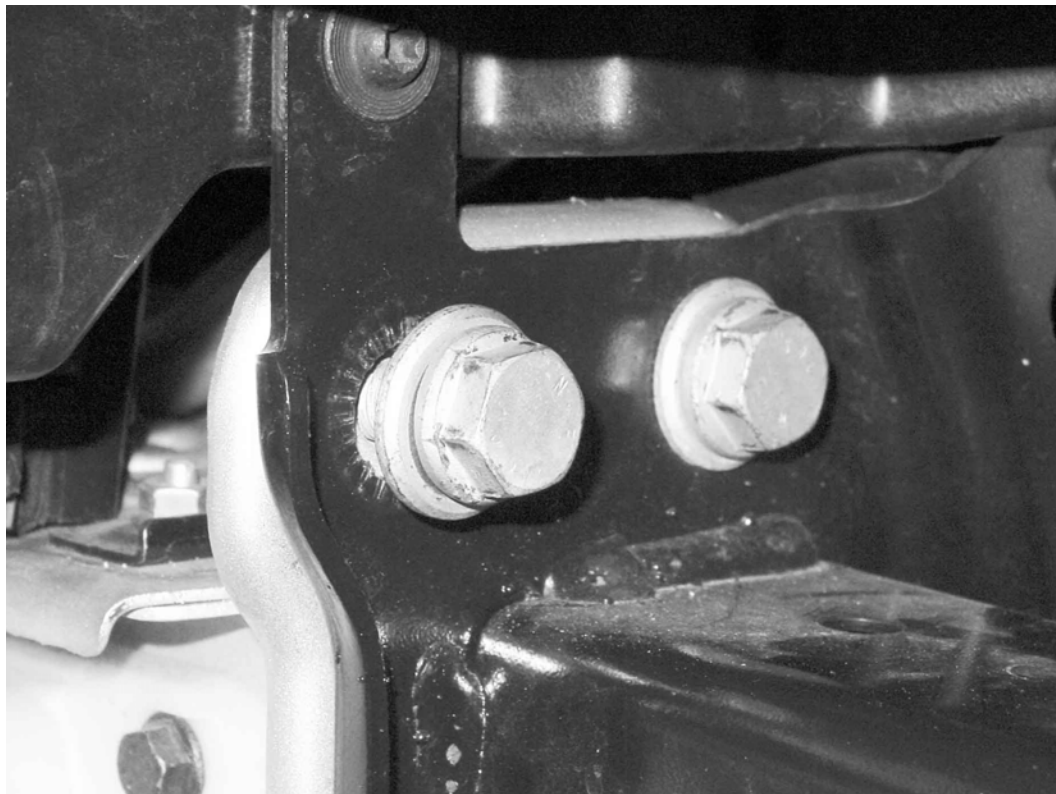


41) With help from a partner to support the radiator core support, tighten the 16mm bolts while trying to align the heads of the bolts with the marks from where they were previously installed. Tighten the upper T25 fender bolts at this time too.

- 16MM HEX
- T25 TORX



42) Remove the two long APR supplied bolts and replace the last two 16mm bolts connecting the core support to the front frame rails.



- 16MM HEX



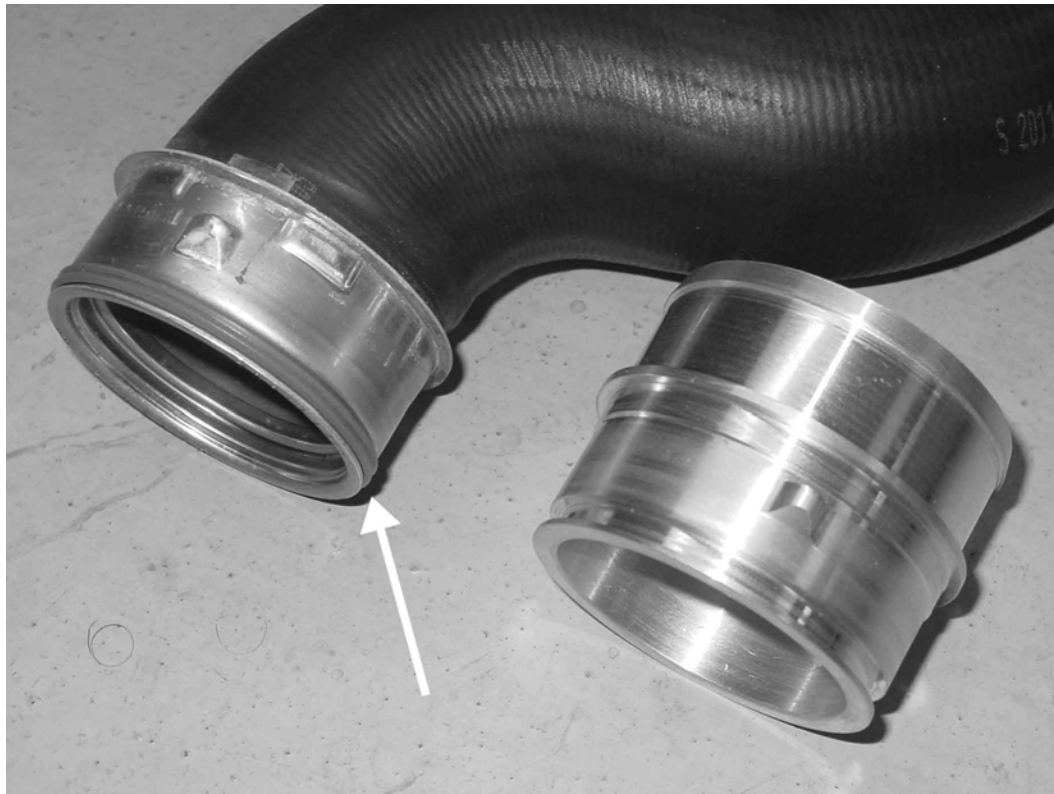


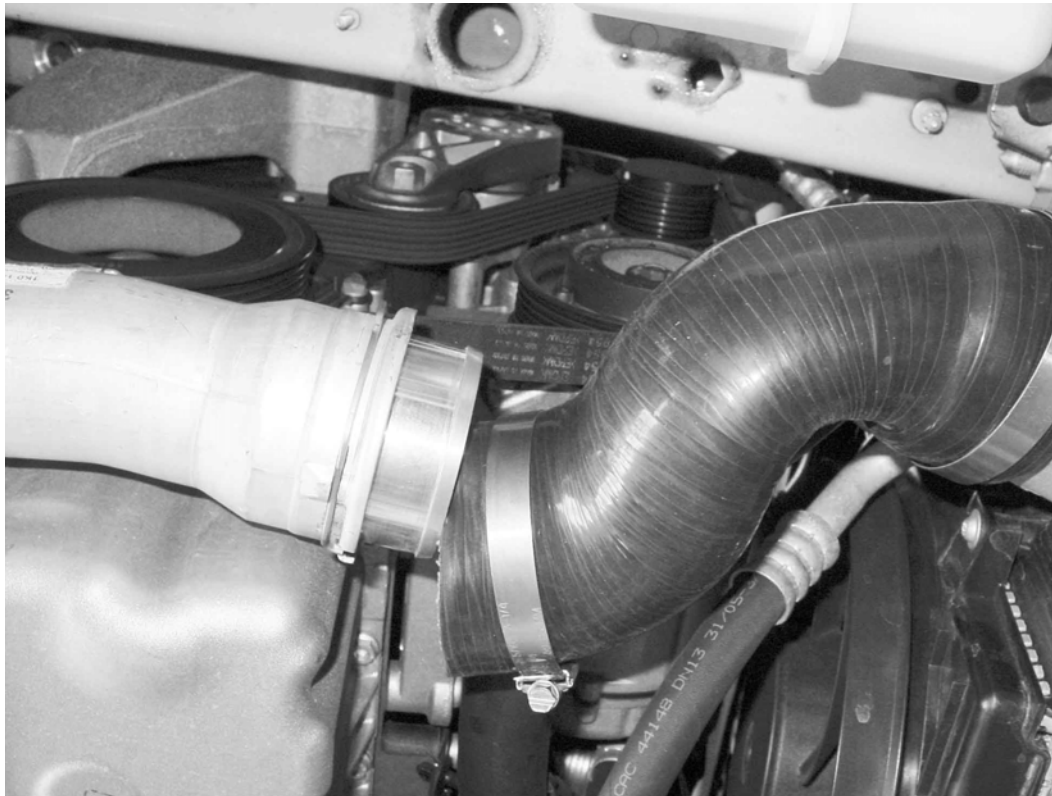
43) Install the APR driver's side intercooler hose with the supplied hose clamps.

- FLAT



44) Remove the rubber o-ring seal from the smaller coupling off the stock passenger intercooler hose coupling. Install this seal onto the APR coupling adaptor.





45) Making sure the locking clip is pulled away from the stock coupling on the car, install the APR coupling adaptor. Then install the APR passenger side intercooler hose using the two supplied hose clamps. Connect the two ends of the hose, make sure the hose is oriented without any kinks, and tighten both hose clamps in place.

46) Install the headlight supports to the radiator core support using the original T25 Torx screws, two per side.



- T25 TORX





47) Reconnect the hood release cable and reconnect the housing with the factory clips behind the drivers side headlight. Confirm that the hood release works from inside the car before closing the hood.

48) With a partner, get the bumper cover and place it close to its original position on the car. Reinstall the headlight washer hose in the original clips in the bumper, and reconnect the headlight washers. Release the clamp on the headlight washer hose and check for leaks.





49) Reconnect the foglights and sidemarker electrical connections on both sides of the bumper.

50) Slide the bumper back into its original position on the car. The sides of the bumper cover slide into the bumper cover clips from the front of the car. Reinstall the two T25 Torx screws that normally sit behind the radiator grill to keep the bumper cover in place.

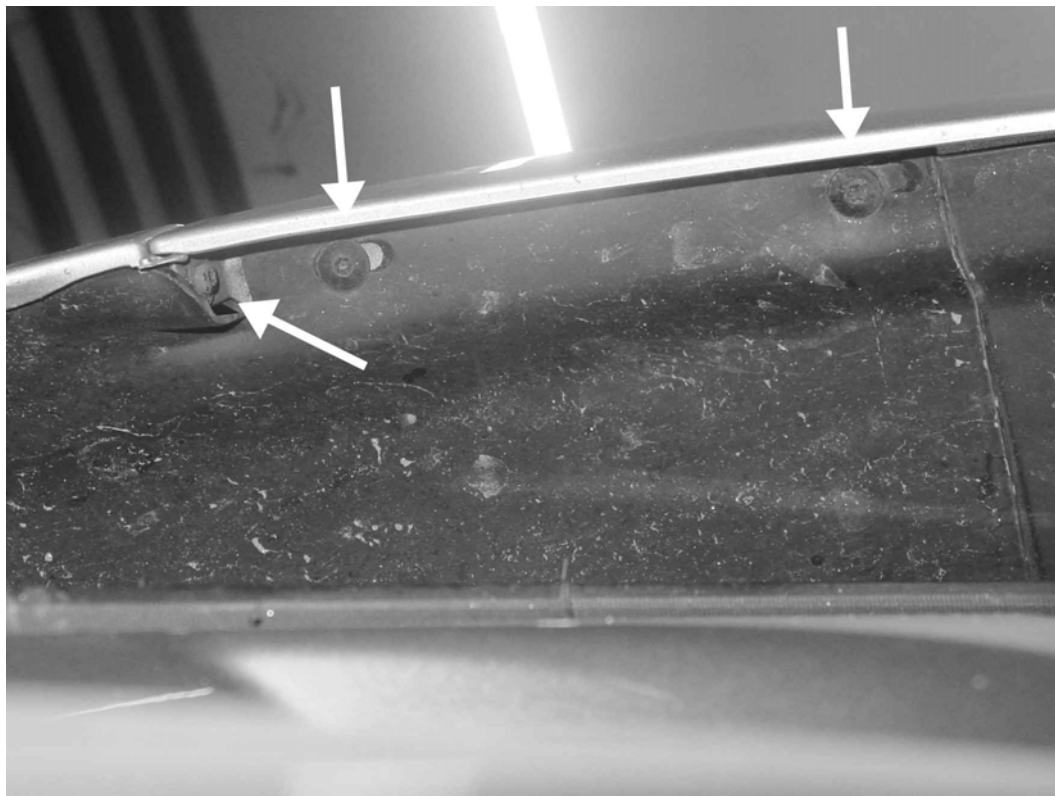
- T25 TORX



**APR, LLC**

1027 Opelika Road Auburn Alabama 36830

Installation Procedure - Step 50



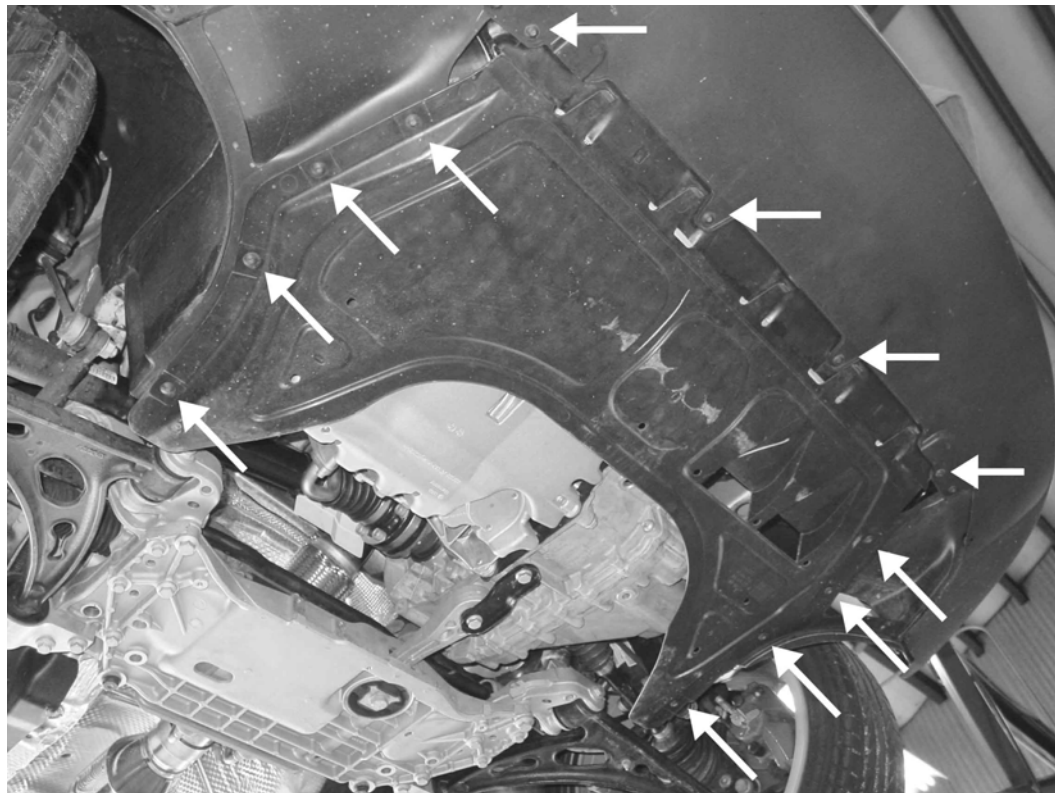
51) Reinstall all of the T25 Torx screws that connect the bumper to the wheel well liners, including the two T25 Torx screws that connect the bumper to the fenders.

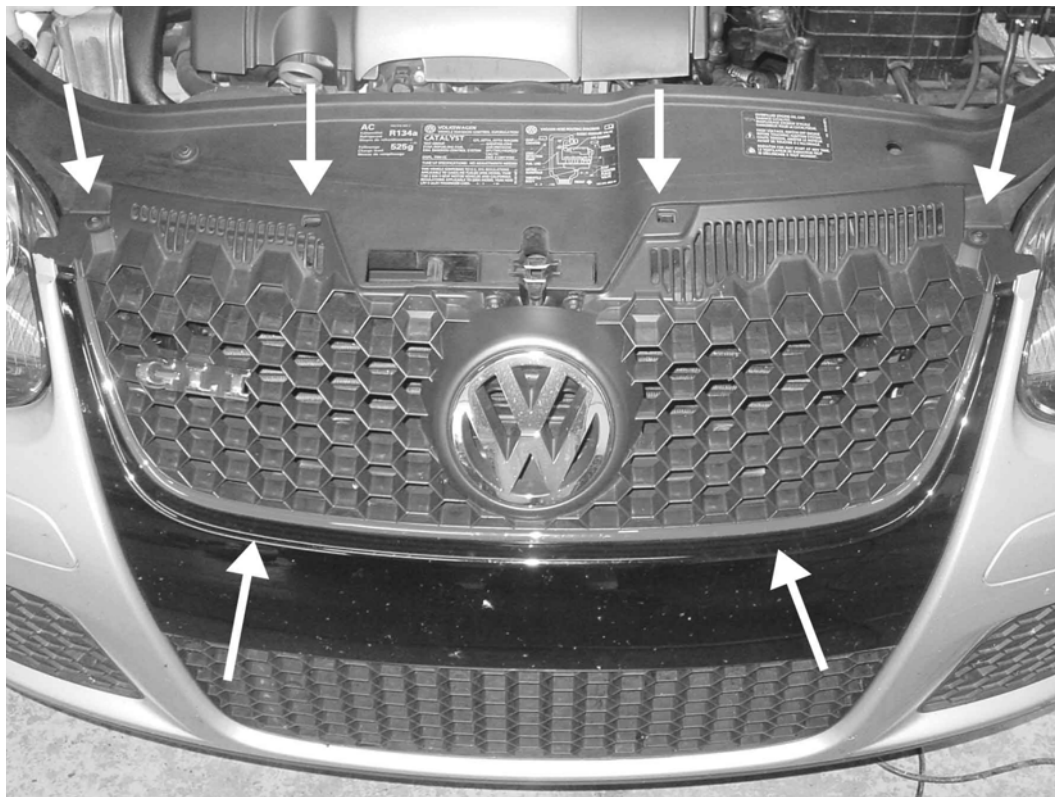
- T25 TORX



52) Reinstall all of the T25 screws that run along the bottom of the front bumper. Also reinstall the belly pan on the car with the T25 Torx screws.

- T25 TORX





53) Place the bottom of the radiator grill into its original location, and install the two Phillips screws. Rotate the top of the radiator grill back, snapping the two upper center clips into place. Reinstall the two T25 upper screws on the radiator grill.

- T25 TORX  
- #1 PHILLIPS



54) Reconnect the battery on the car, and remove the car from the jack stands or lift that you were using.



- 10MM HEX

